

Content

How to Download the hsbSetup.....2

Start the hsbSetup5

 What is the purpose of a hsbCompany Directory?.....9

Installation Complete.....9

 Proxy Settings (INFORMATION) 10

Starting hsbcad 11

Configuring hsbcad for Security Settings..... 12

 Unlocking file/folder locations: 12

 Updating hsbcad..... 13

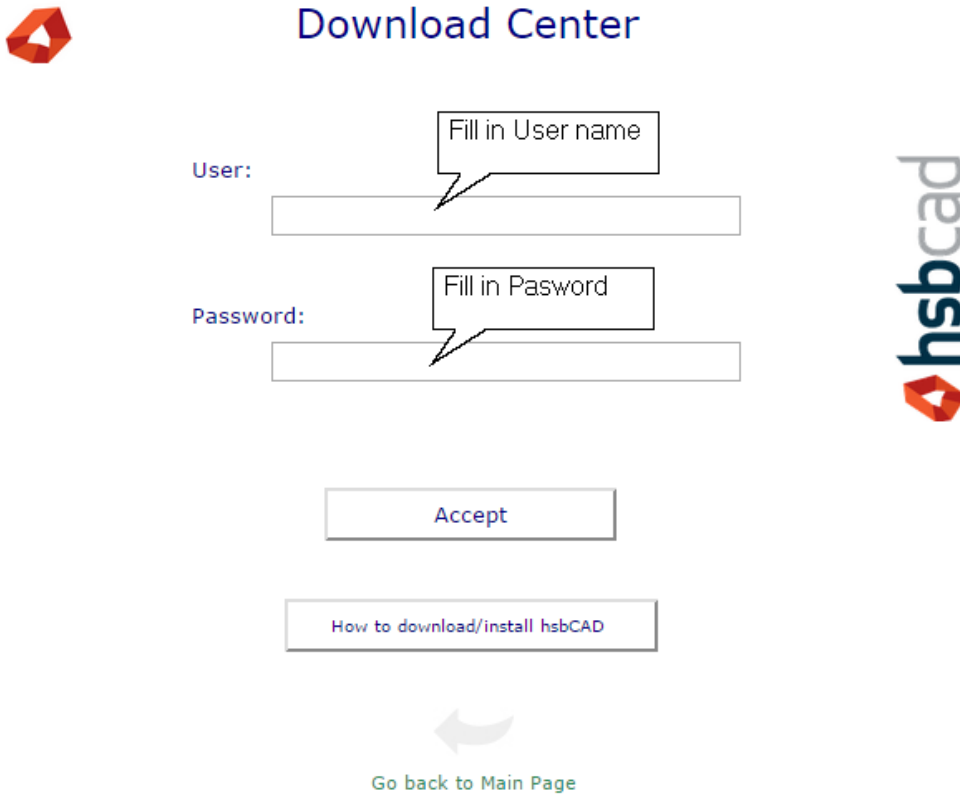
How to Download the hsbSetup

This document has been created as a step by step guide to installing the hsbSetup.

Customers who currently only have hsb12 installed do not have to make any changes to their system prior to running the new hsbSetup. However Customers that have a Beta version of hsbcad13 or hsbcad 2009 must just delete the hsbIcons from the desktop of the machine.

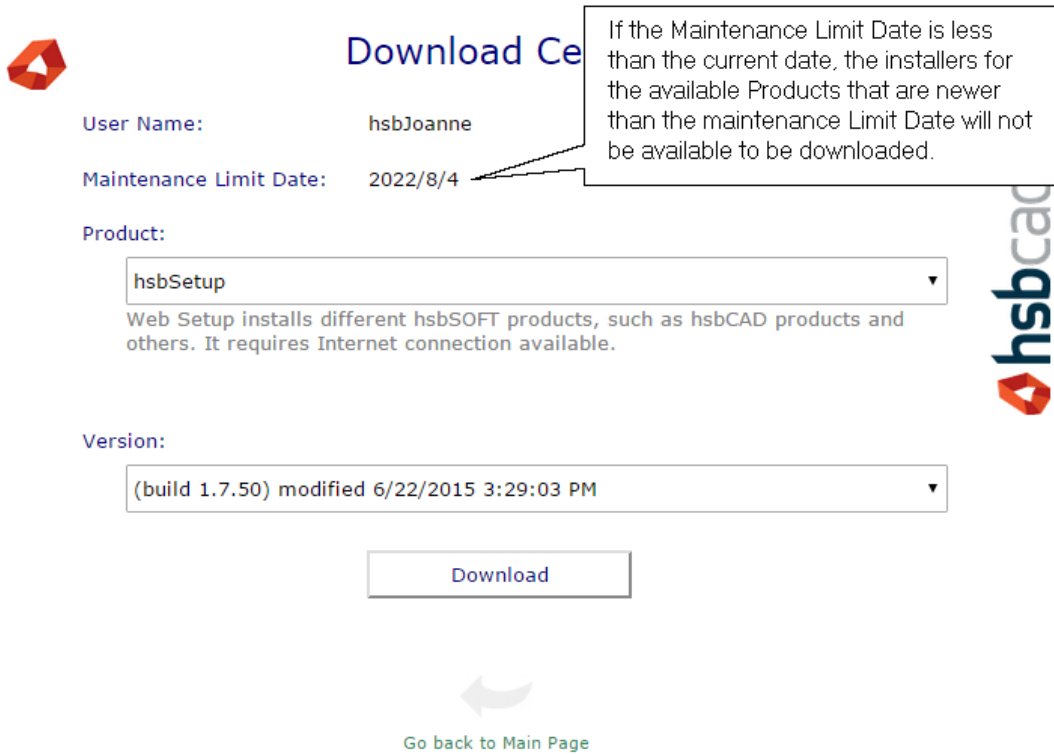
The hsbSetup is pretty straight forward. Hsbcad has developed a download site for customers to log in and download the latest hsbSetup files. This section of the document will illustrate the steps to download the hsbSetup and run it.

- Select the hsbcad download Center to start the hsbcadSetup:
<http://www.hsbcad.com/hsbDOWNLOAD/DownloadCenter.aspx>
- This site will ask you for your user name and password. These are sent to in an e-mail.



IMPORTANT: Once you have entered the username/password it should give you access to the download center. However an error could appear stating the maintenance of the license has expired. If this occurs please e-mail your support desk.

- Select the "hsbSetup".
- Select the 'Version' you want to download.
- Select the 'Download' button to start the downloading.

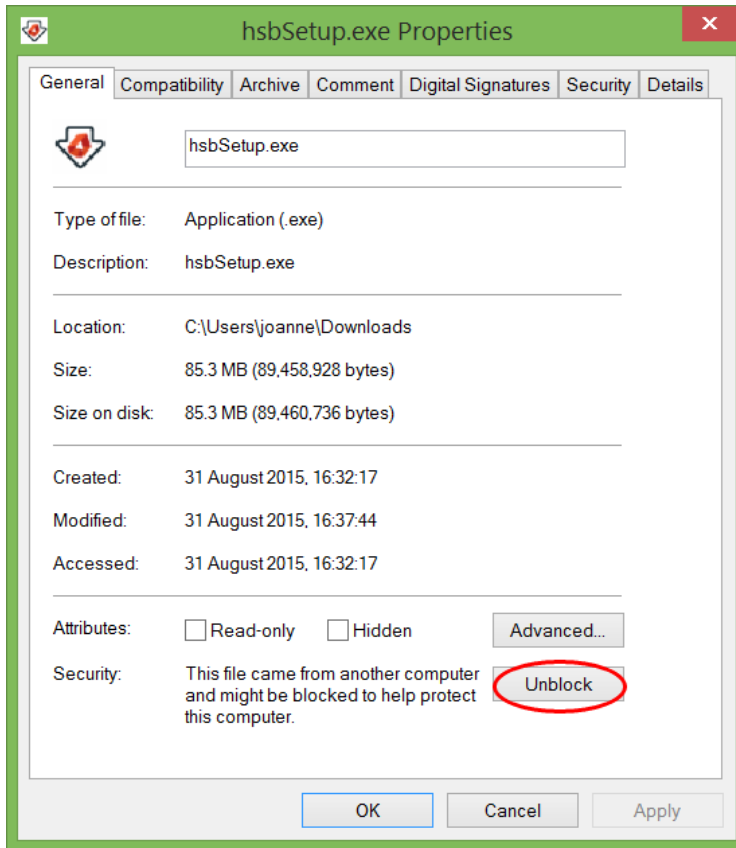


IMPORTANT: maintenance Limit date, if the Maintenance Limit Date is less than the current date, the installers for the available Products that are newer than the Maintenance Limit Date will not be available to be downloaded.

It allows customers who have not paid maintenance fee, only to download installers that were released before his Maintenance Limit Date.

- Save this file on your computer in a folder called C:\hsbSetup (Make a new folder called hsbSetup if you don't already have one), e.g. **C:\hsbSetup**. (This is a temporary installation folder), DO NOT put this on a server.
- You must **Unzip** the file in the hsbSetup folder.

Due to the nature of software, some antivirus software that will block certain hsbcad files and prevents the application from running correctly. In some cases you might get an error message while installing so it's advisable to Unblock the hsbSetup.exe file.

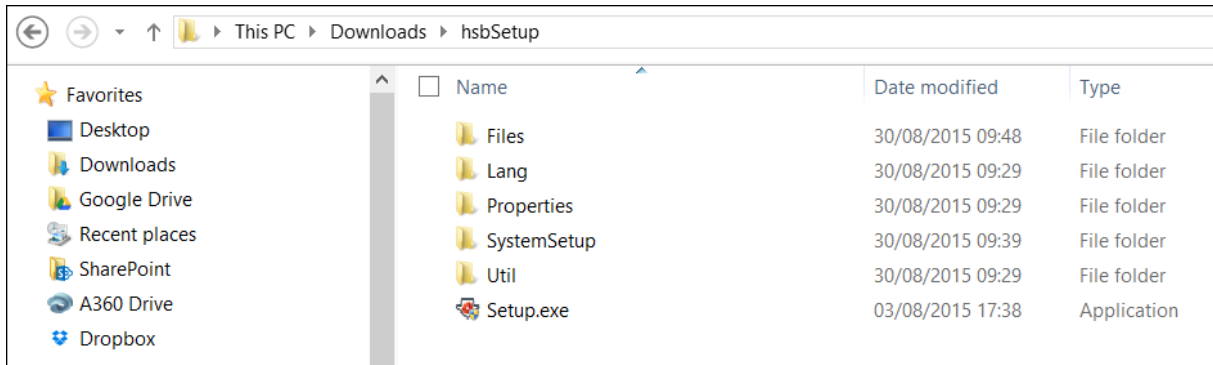


Right mouse click hsbSetup.exe\Properties\Unblock

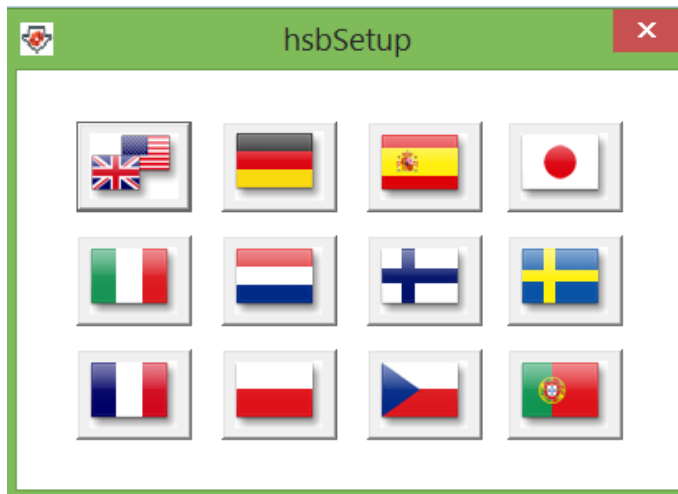
IMPORTANT: You must unzip before you run the **Setup** application, otherwise you won't have the right file structure that **hsbSetup** needs to work with.

Start the hsbSetup

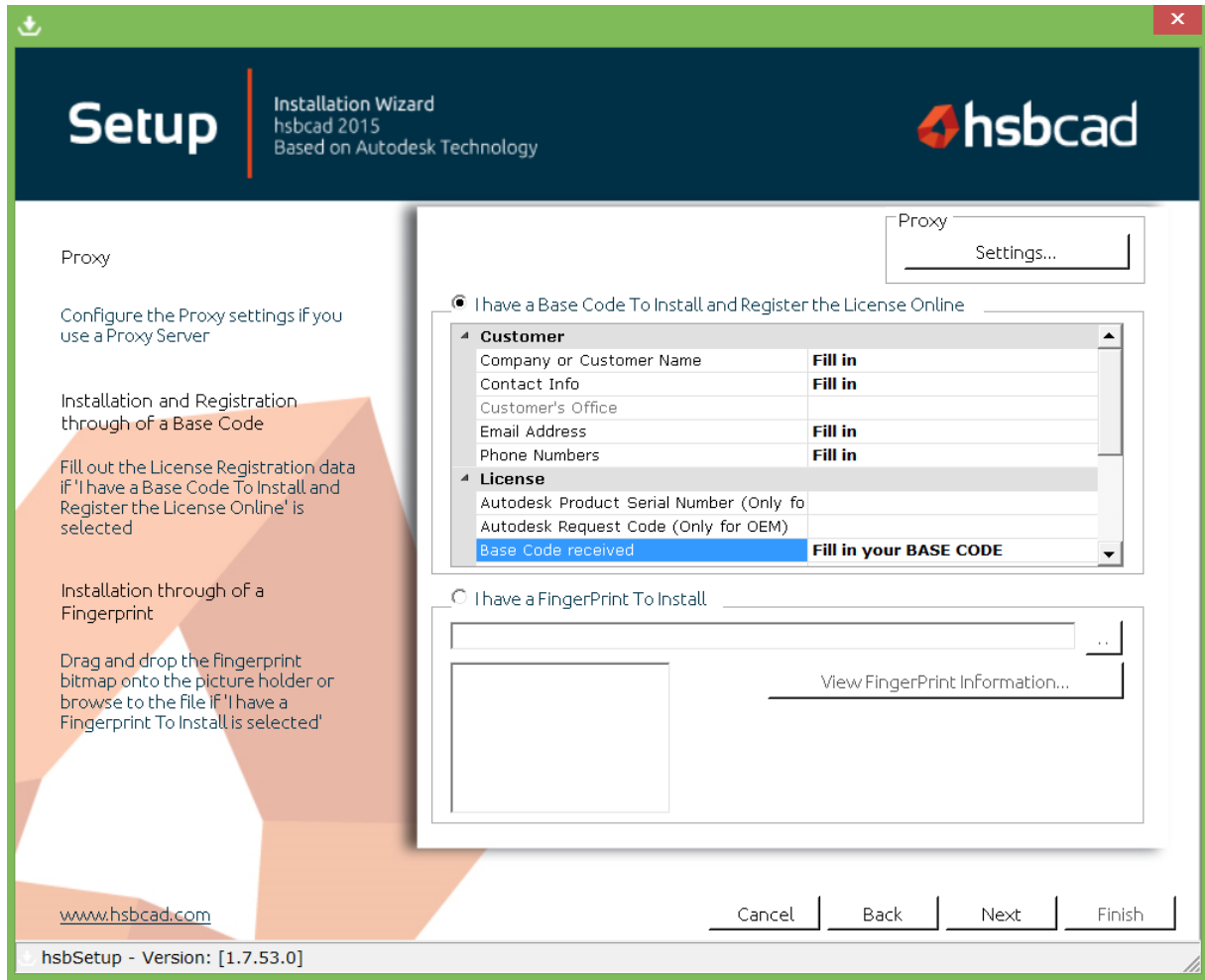
From the **C:\hsbSetup** folder double click on the **'Setup.exe'** file as shown below to start the installation.



Select the appropriate language for hsbcad to be installed in. (English recommended)

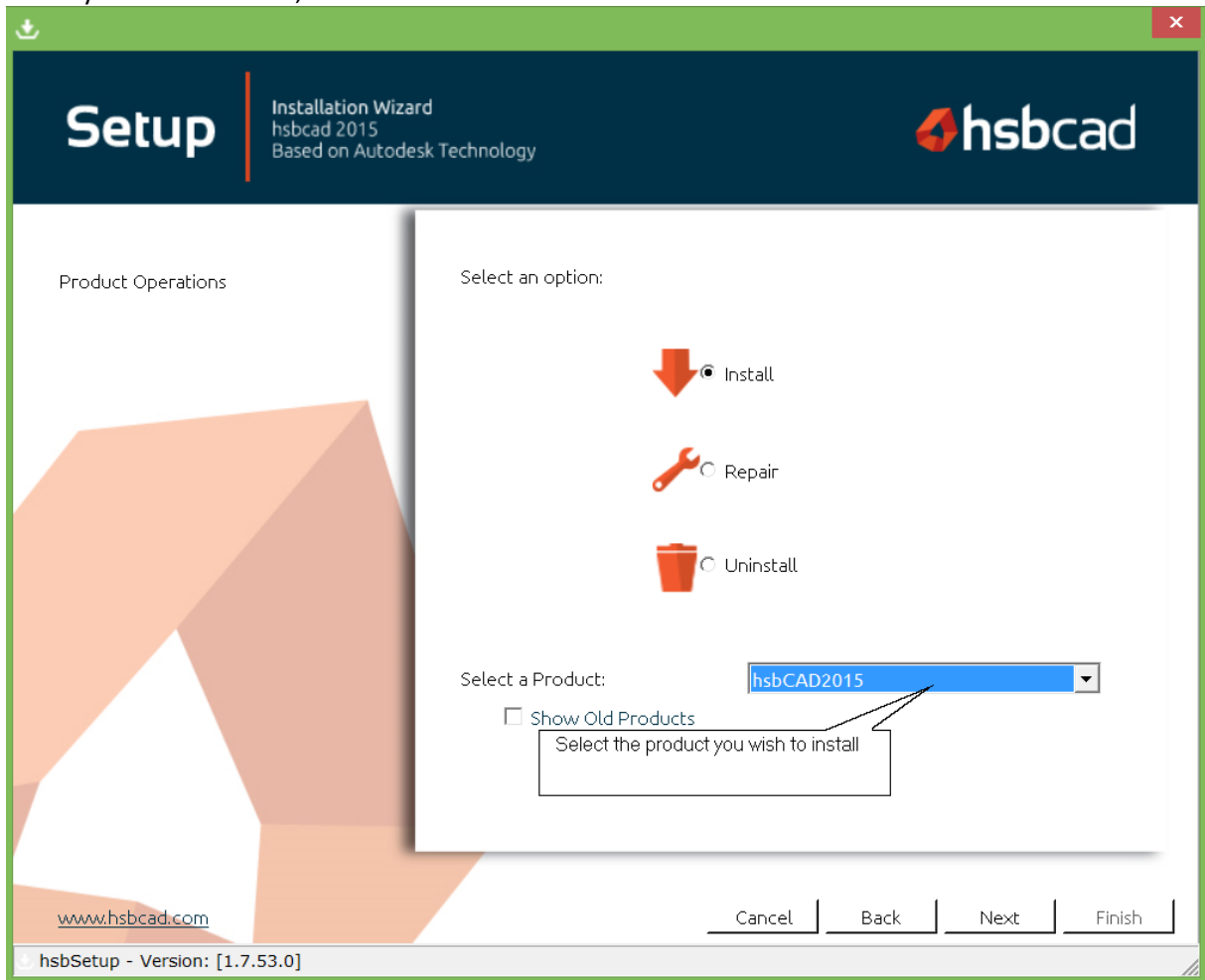


- The setup Requirements will appear. Select **ok** to the first dialog window.
- A welcome window appears just select **next** to continue.
- The next window to appear asks you to select the setup fingerprint. If your fingerprint is in the same folder as the hsbSetup, it will automatically detect it. (If the fingerprint is not loaded, you must select the triple dot button to the right of **Fingerprint file**: and select the fingerprint.bmp file manually.
- Select the "I wish to register the License Online".

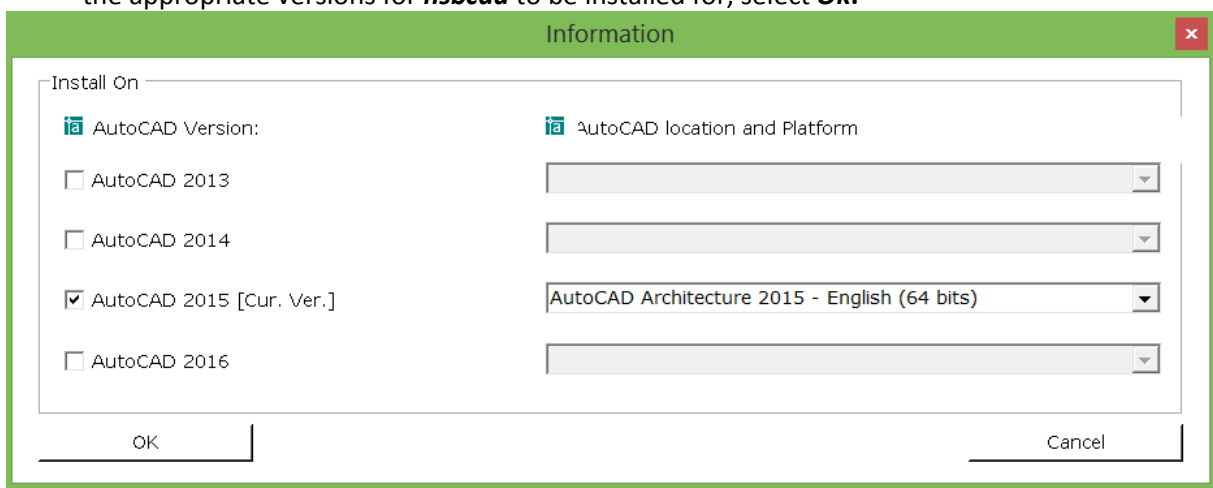


- The Base code will be supplied in a separate email, if you don't have one please contact the support team (support@hsbcad.com).
 - When you select **View Fingerprint Information**, a list of the modules you are permitted to install, will appear under 'AllowedModules'.
 - When you select '**Settings**' you will be able to enter the Proxy settings (See chapter 5.1).
- Select **Next** to continue.

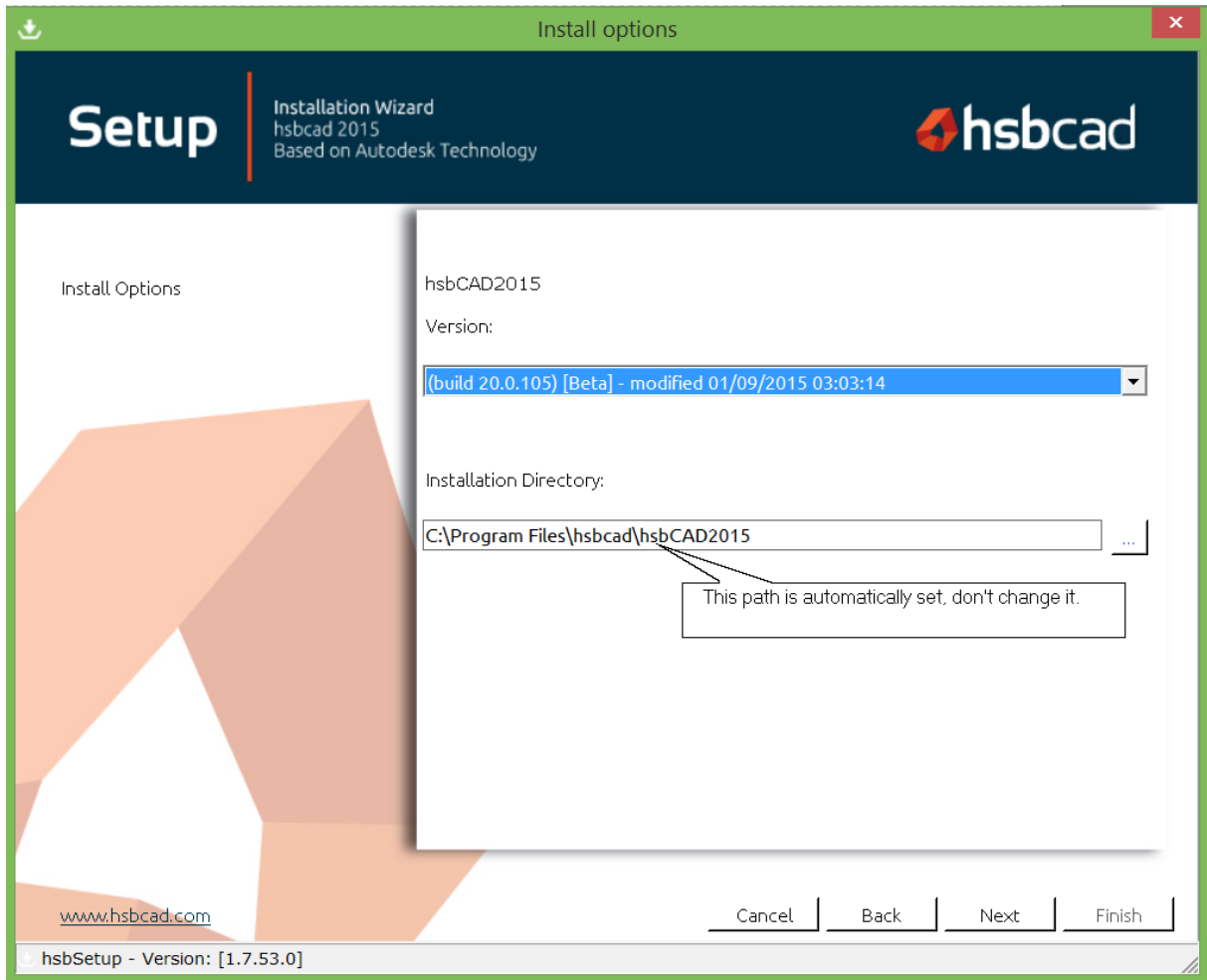
- In the next dialog box you have to select the type of Setup you wish to run, the Product that you wish to install, and select **Next** to continue.



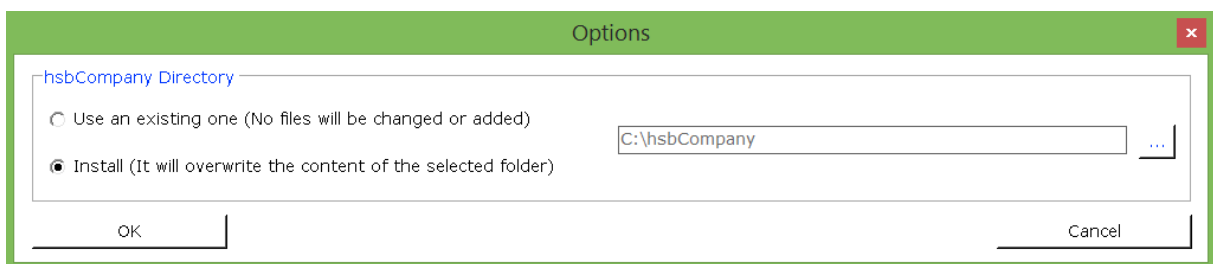
- The setup program will detect which versions of AutoCAD are present on your machine; select the appropriate versions for **hsbcad** to be installed for, select **Ok**.



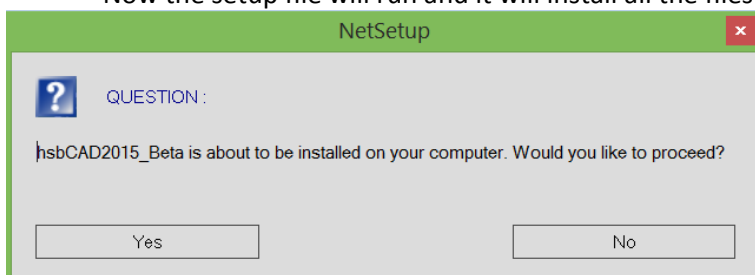
- Select the version of hsbcad you want to install and then select **Next** to go on.
- As default **hsbcadxxx** will be installed to **C:\Program Files\hsbcad\hsbcadxxx**,



- The next window asks you if you accept the terms and conditions. If so select **Next**.
- Following that, the setup is nearly ready to install the software.
- If you are a first time user select ,‘install‘, if you are already a hsbcad user select ,‘Use an existing one‘, select **Ok**.



- Now the setup file will run and it will install all the files needed.



- Once the setup is complete it will create the new Hsb icon and updater icon on your desktop.

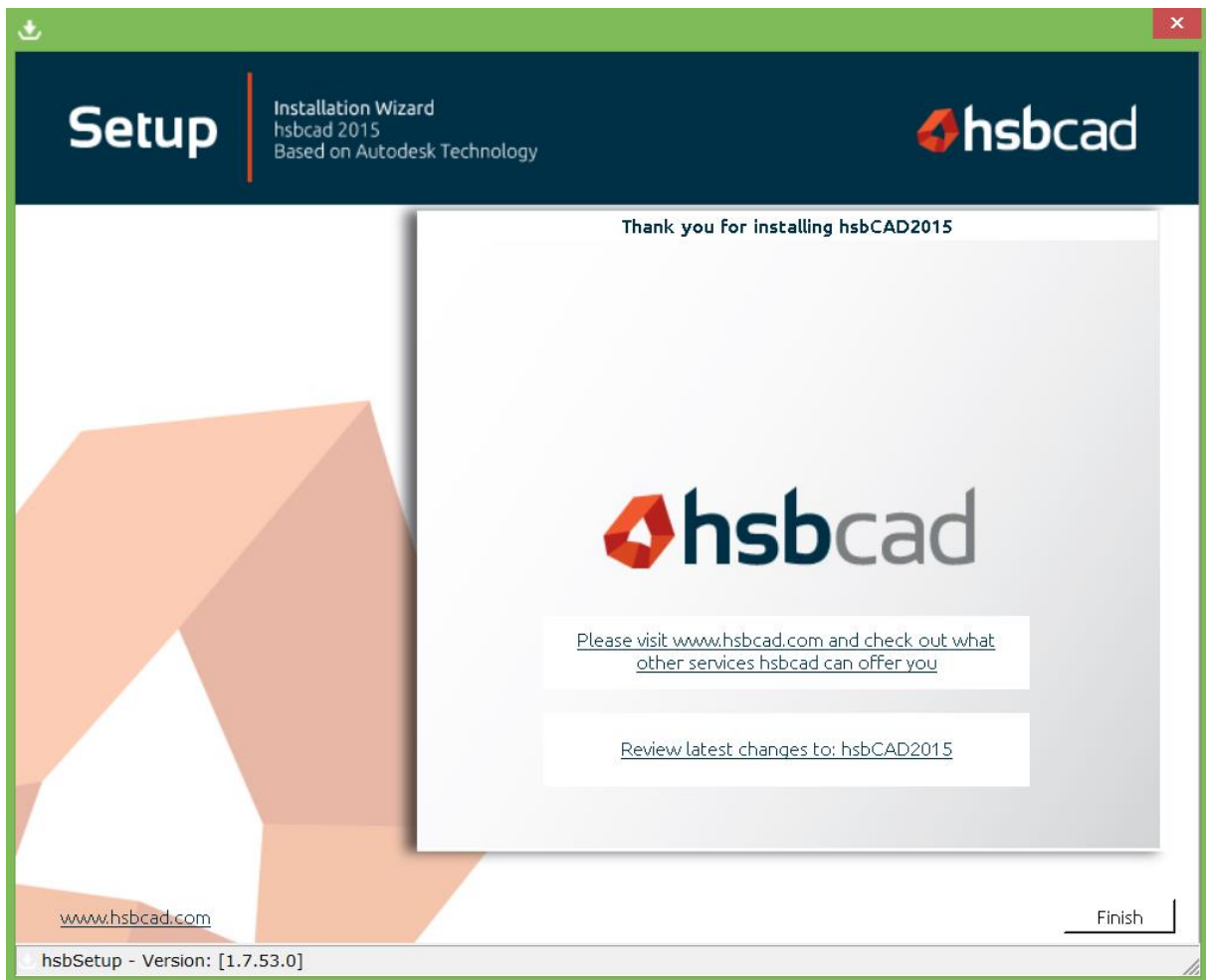
What is the purpose of a hsbCompany Directory?

This contains the company or project specific default settings, including catalogs, construction details ect...

- **Use an existing one** must be used if you have received previously a hsbCompany folder from hsbcad Staff, or if you have a hsbCompany folder that you would like to use.
- **Install** must be used if you want to create a new hsbCompany folder.

Installation Complete

The installation is now complete and you have the options to visit the hsbcad website, review the latest changes or to end the setup by selecting **Finish**.



Proxy Settings (INFORMATION)

The setup.exe will need to download files from the hsb server and due to some security restrictions within companies this may not be possible. However if the Proxy settings are filled out correctly it should give us full access to our external server. These settings should be filled out by your IT department.

The proxy settings are used by customers that don't have an internet connection, but do have a local network that connects to the proxy server.

The '**Proxy Settings**' should be filled in by the **network manager**.

Select '**Setting...**'.

Proxy Host – IP address or name of the server.

Proxy Port – Network manager should know what to fill in.

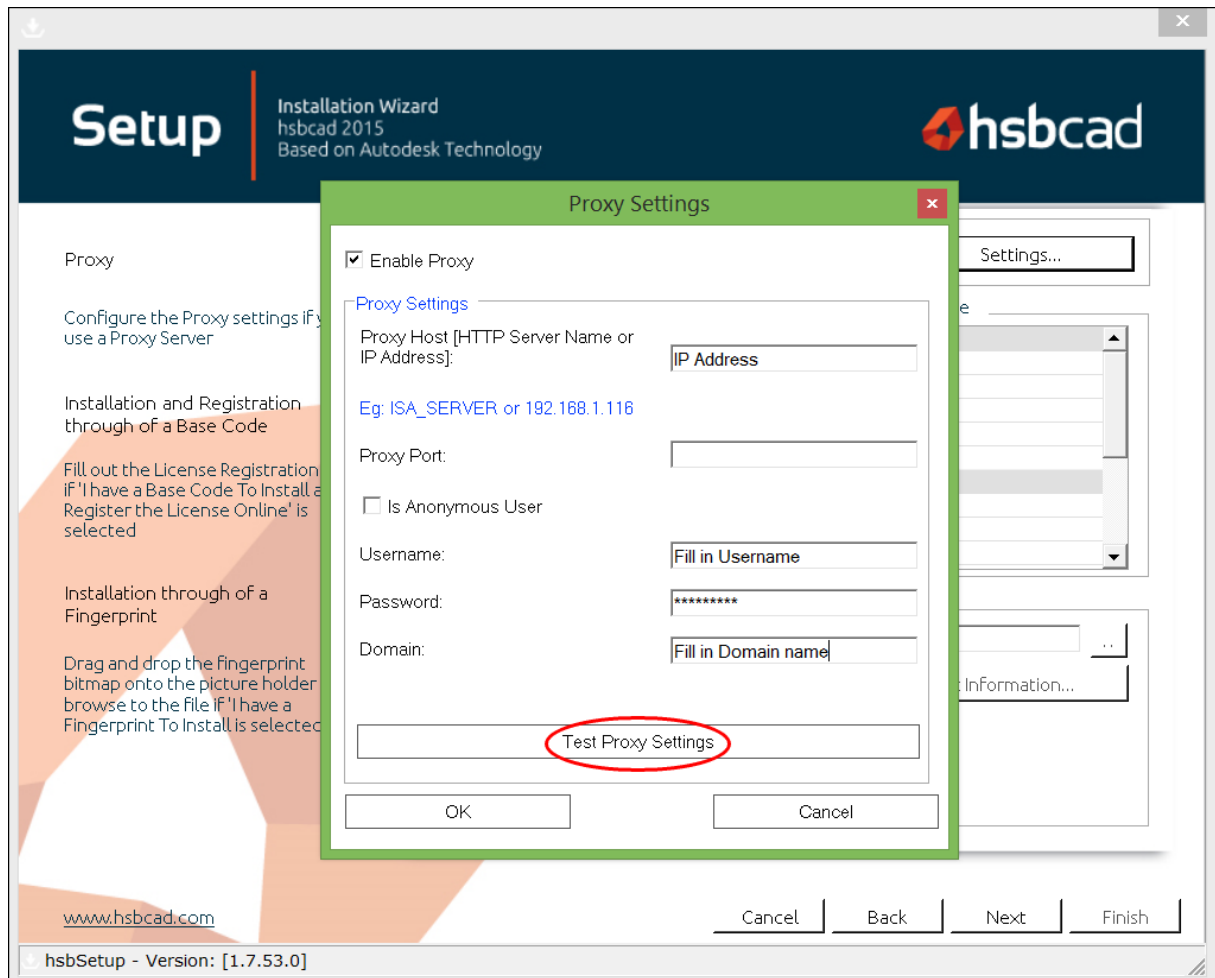
Username – fill in the username, this could be protected.

Password – fill in the password, this could be protected.

Domain – fill in the domain name.

Before closing this dialog box, always do a Test of the settings, select **Test Proxy Settings**.

The settings will then be saved in the registry, select **Ok**

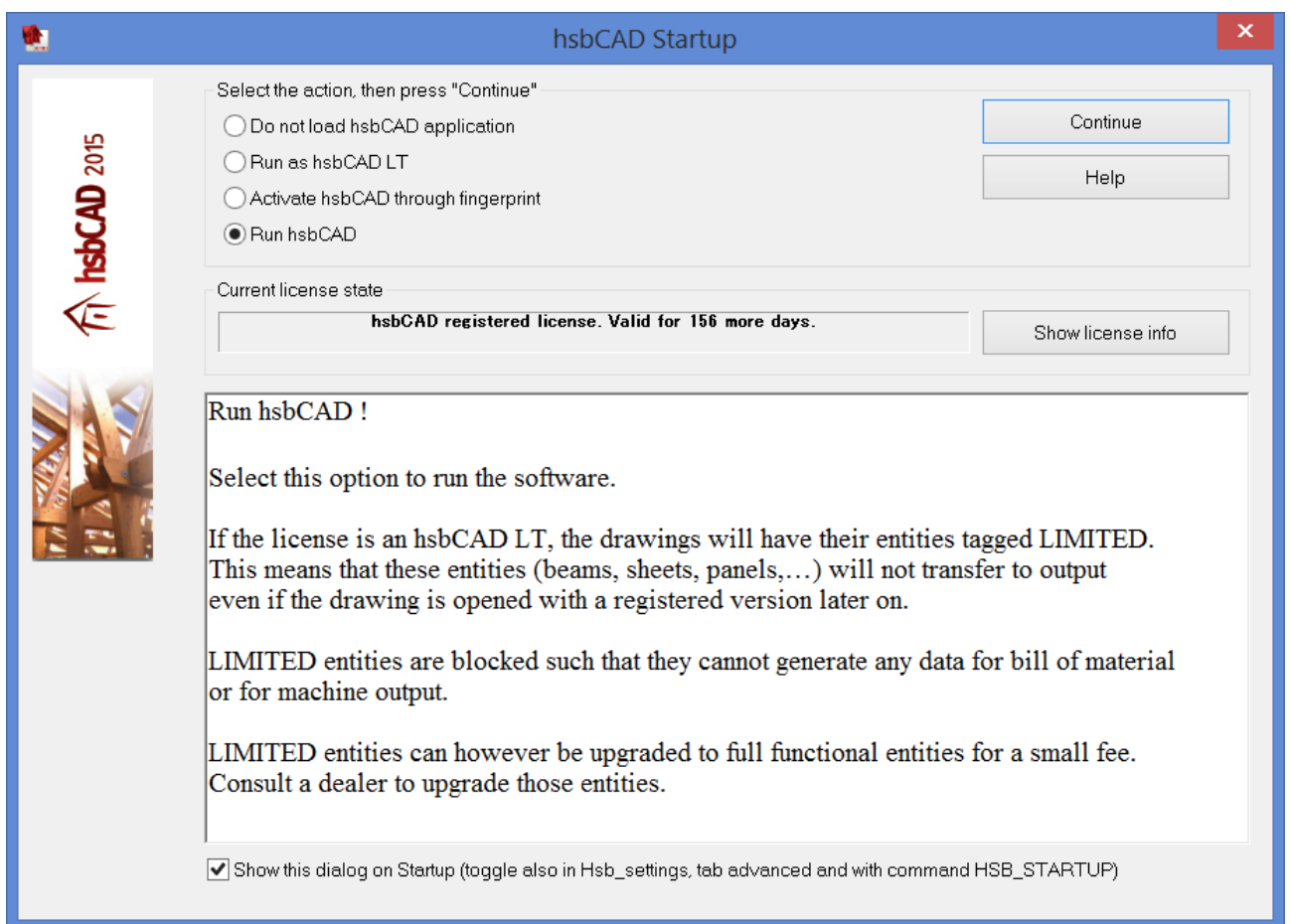


Starting hsbcad

- Start hsbcad.... (e.g. from your Desktop Icon)



- The following dialog will appear.



If you have had a 'Trial' version installed on your computer then you will have the choice in

- Do not Load hsbcad Application
- Activate hsbcad through Finger Print
- To proceed with the authorization, select the option for "Activate hsbcad through Finger Print" and select Continue.

Configuring hsbcad for Security Settings

There are a number of different anti-virus software available on the market. Some antivirus software will not affect the install or running of hsbcad.

Unlocking file/folder locations:

Due to the nature of software, some antivirus software that will block certain hsbcad files and prevents the application from running correctly. Below is a list of the file locations that need to be unblocked or used as exceptions in the antivirus scanning process:

- Folder <hsbInstall>\Data

This one is used in lisp generation process only. Files are created and deleted in this folder.

- Folder <WindowsTempPath>\hsbcad\GenerateConstruction

This one is used for the new generate construction only. On Windows 7 and Vista machines, this is located at:

C:\Users\“Username”\AppData\Local\Temp\hsbcad\GenerateConstruction. On XP, this is located under the temp file within c:\document and settings.

In each of these locations, there are 2 subfolders in there where files are created and deleted: “Data” and “Project”.

- Folder <ProjectLocation>

In this folder the project.ini file is created as well as dxa and dxi files during the store3d. This is the location where the client project files and drawings are stored. This can be either locally on the C drive or server based. Remember you MUST save the drawing within your project location path before using the hsbcad tools.

The Generate construction uses files from following folders and subfolders, but in these folders no files are created or changed. However, this should also be taken into account within the security settings.

- <hsbInstall Path>

This is typically, C:/program files/hsbSOFT/xxxx

- <hsbCompany>

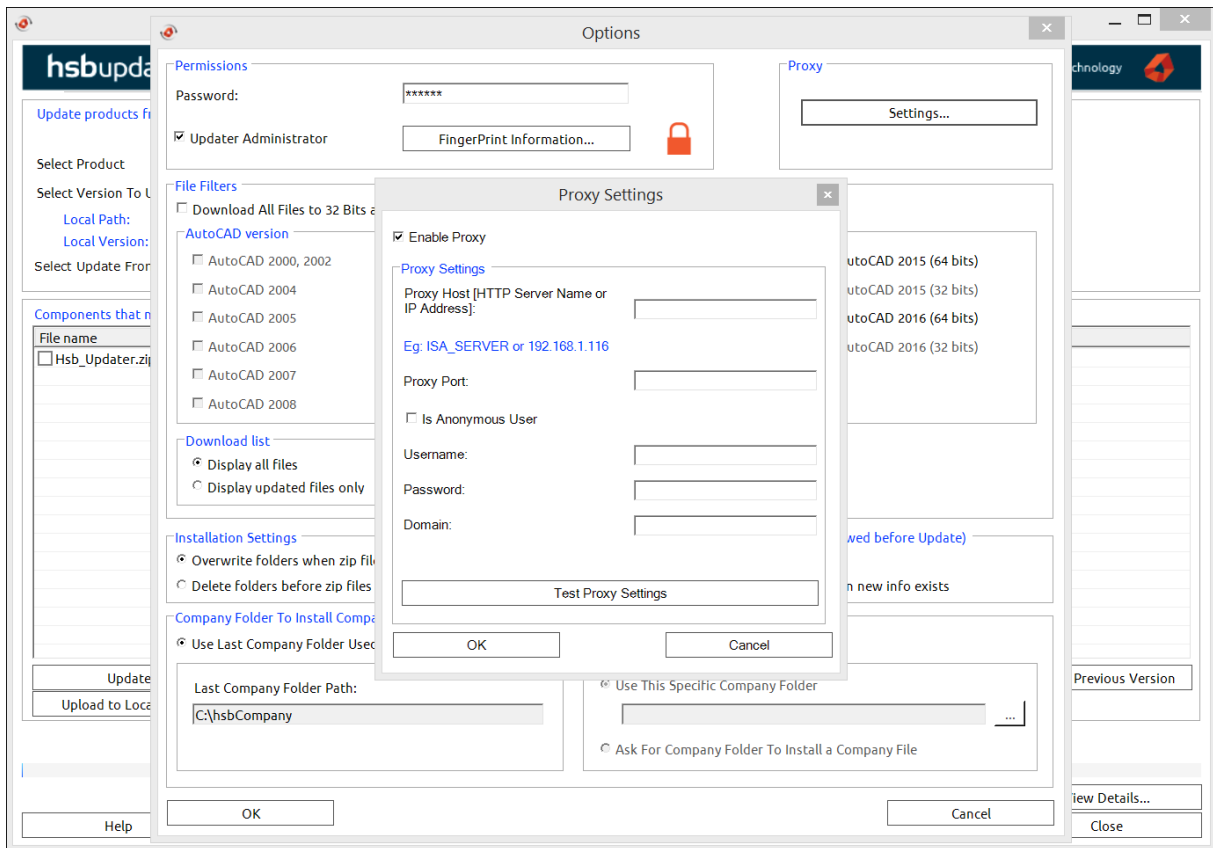
This is the location where the company folder is stored holding all the company details.

Updating hsbcad

When updating hsbcad, you must be able to bypass the firewall.

Firewalls may prevent updates of the hsbcad software.

In these instances you will need to fill out the proxy settings in the hsbcad Updater as shown below:



If users are only configured as Standard Users on their PC, all updates should be done in Administrator Mode. Once the update is completed, hsbcad **MUST** to be run once as there may be the need to set some registry details based on the requirement of the update. Failure to do this will result in the system not operating correctly upon use as a Standard User.

If you do come across an antivirus that still does not allow hsbcad to run even thou you have unblocked these files then you will need to contact hsbSupport. Please do so by sending an email to your support desk.